

Video Surveillance Management Platform Operation Instruction

Item

1、 System function overview	3
2、 System environment requirements	3
3、 Software installation and uninstall	Hiba! A könyvjelző nem létezik.
3.1 Software install	4
3.2 Software changes or uninstall	7
4、 System login	8
5、 Regional management Settings	9
6、 Add equipment	10
7、 Monitoring and playback	Hiba! A könyvjelző nem létezik.
7.1 Real-time monitoring	11
7.2 History playback	13
8、 Electronic map	16
8.1 Local map setup in configure client	16
8.2 View electronic map in Monitor client, Alarm client	18
9、 Storage configuration	19
9.1 Store configuration in Config client	19
9.2 Using monitor video client to check the video from the storage server	21
10、 Alarm client	18

1、 System Function overview

Video monitor management platform consists of center management server, streaming media server, centralized storage server and decoding of the server. Client has monitor client, alarm client and configuration client, split into three separate applications, this will be more close to the actual situation, on the average user to parameter configuration, monitor, separately from the management, use more human. Management platform is mainly to resource, equipment for centralized management, and at the same time forward with streaming video and alarm trigger multiple functions such as management.

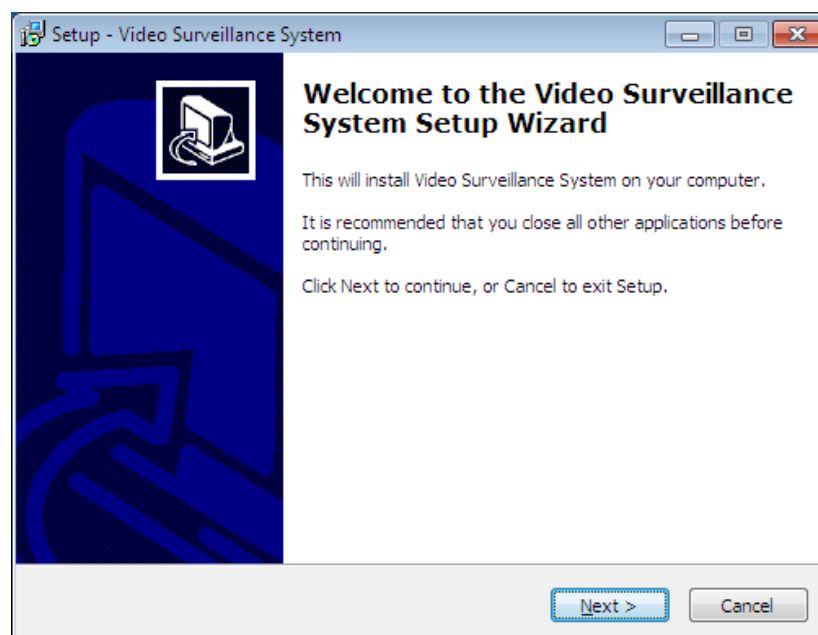
2、 Environment Request

Monitor Server			
	Items	Basic Configuration	Suggest Configuration
Software	OS	Window server 2003 standard Edition Service Pack 2	Window server 2003 standard Edition Service Pack 2
	Data Base	Mysql5.0	Mysql5.0
Hardware	CPU	Intel(R) Pentium(R) Dual CPU E2180 2.00GHZ	Intel(R) Pentium(R) Dual CPU E2180 2.80GHZ
	Memory	1G	2G or above
	HDD	80G	160G
	Network Card	10/100M Adaptive network card	10/100M Adaptive network card
	Video card, motherboard, sound card	No requirement	
	Description	Monitor server has very high request on the capability for memory ,CPU. This Memory and CPU Configuration	

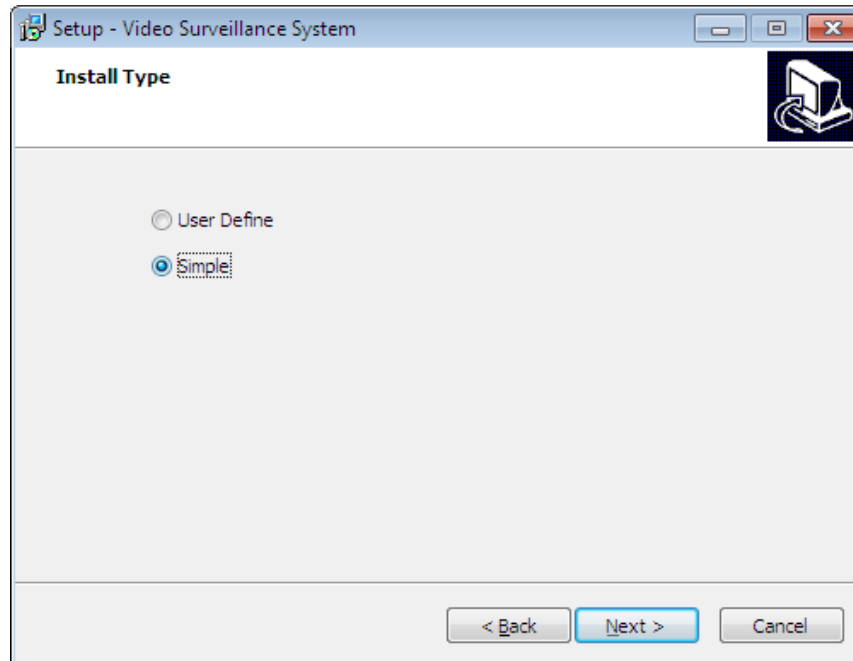
3、 Software installation and unload

3.1 Software installation

Double click PlatformSetup.exe, start the installation instruction wizard. Click “Next” for next steps

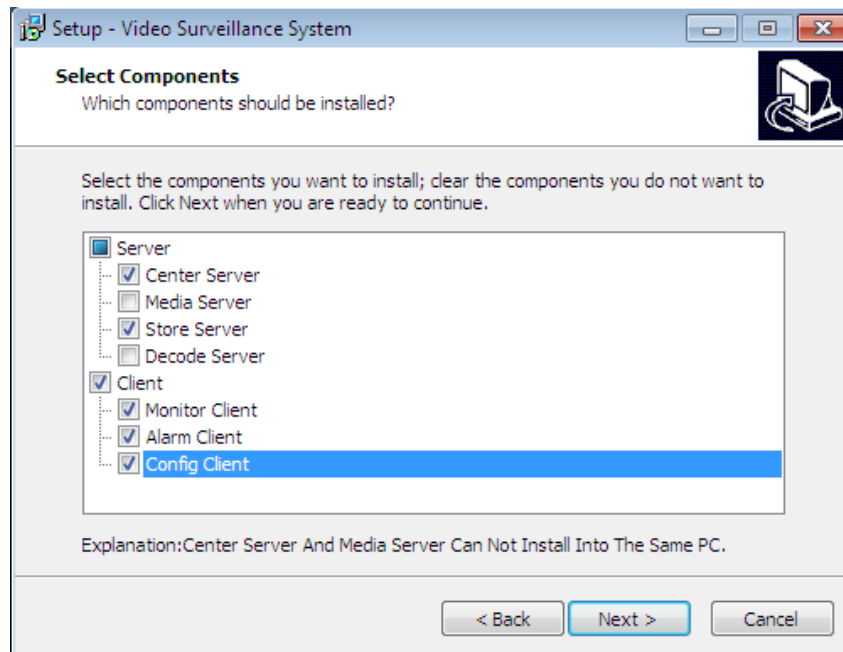


Programs are installed in the system tray Program by default File folder ,also can click ,can also click browse button to set the installation directory .Then Click “ next “,choose the installation type, Installation type has two kinds of custom installation and simple installation

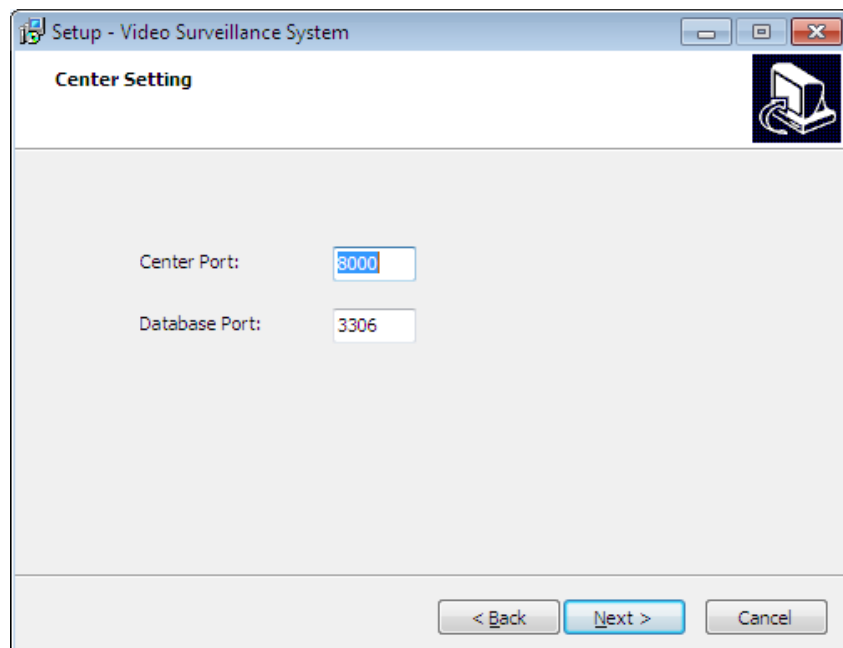


The custom installation requires the user to choose which components; Simple installation is installed by default, will be the default installation center management server, client is configured, monitoring client and alarm to the client. Don't need to use the platform to decode, storage, and streaming media users can choose simple installation, then according to clew to complete the installation.

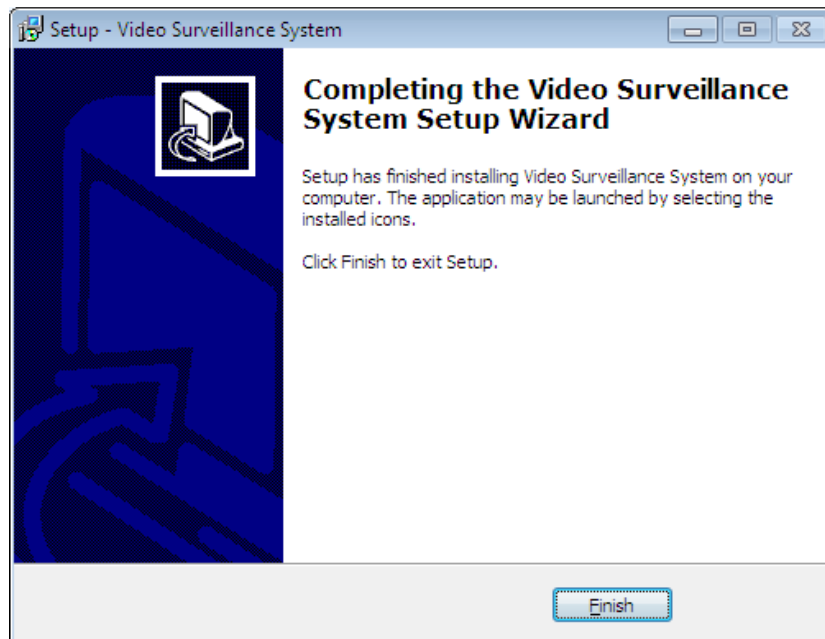
Custom installation according to the need to choose to install components, pay attention to the center management server and the streaming media server can not be installed on the same computer. The followin



Continue clicking “Next”, Enter the port Settings interface



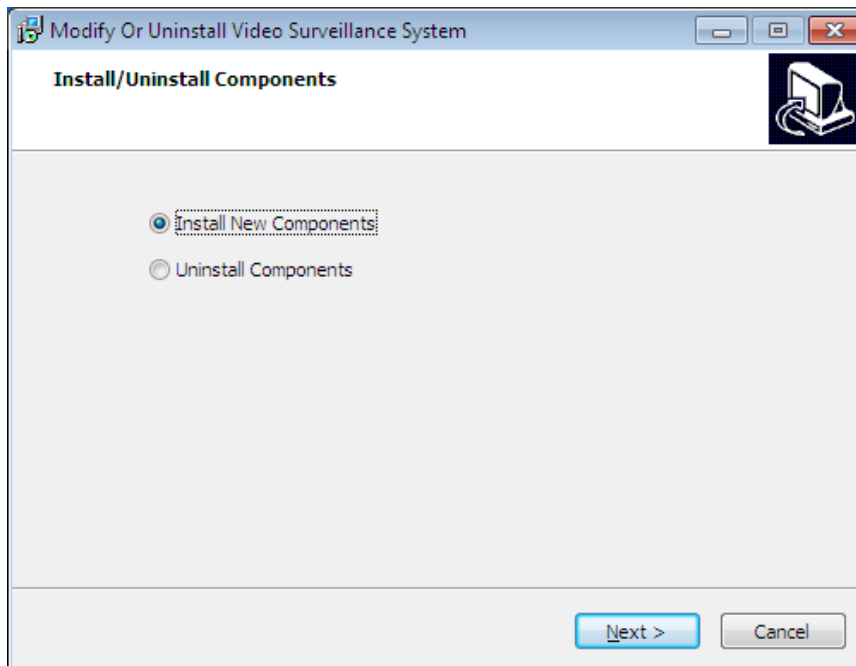
Set the center management server port, and database server port, defaults to 8000 and 3360;
Click next to choose whether to create a desktop shortcut, click next again, can see the ready to install the components. And point "install" button to start the installation;
System installation is complete, click "finish" to complete the installation;



Note: the custom installation in the system will not have the function of decoding, storage and streaming media, so the back fast operation for an explanation of decode, storage and streaming media can not reference.

3.2 Software Change and uninstall


Click “Start ”→Control Panel→Program /Uninstall program,choose the “Video monitoring and management platform” Click the right of mouse ,click “Uninstall program” to install or uninstall.




If you want install the new program, choose the program you need to install(The black means not install yet,you can choose. The gray means it is the installed one,can not be choose),click next to confirm which ones you need uninstall.

4、 System login




Log in by Client:Double click ,you will see the following login interface,input the users name and the password,server IP ,server port,language,then click login.The server ID is the PC IP, port is 8000 , Users name: admin , password : 123456



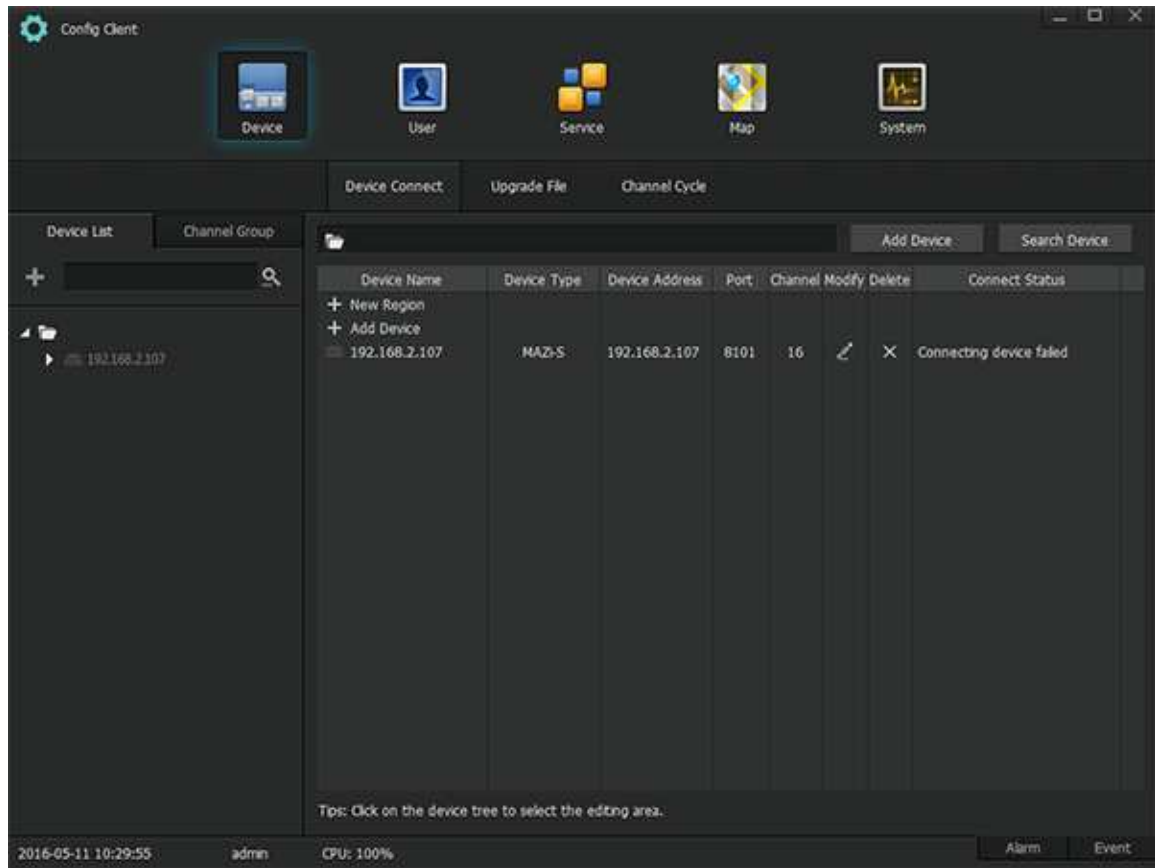
Log in by Monitor Client: Double click , you will see the above login interface, input server IP, server port, users name and the password, The server ID is the PC IP, port is 8000, Users name: admin , password : 123456

Note: After the platform software installed well please log in Configuration Client firstly and log in Monitor Client secondly.

Log in by Alarm Client: Double click , you will see the above login interface, input all information according to the instructions

5、 Regional management Settings

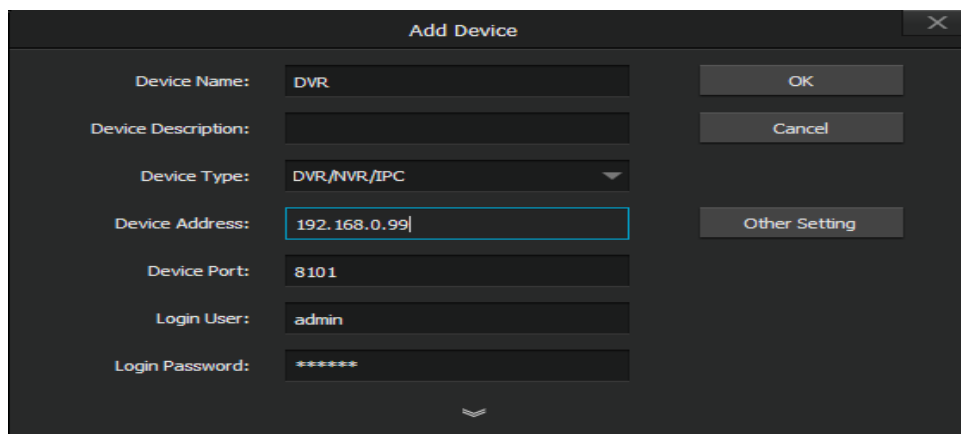
Open Configuration Client, you will see the following interface, click “Device” on the left side, click “+” for setting up new area(main area), you can set up many branch areas to manage. For example, set up Nanshan as main area, set up Tefa as the branch area, no limited.



6、 Add equipment

Two modes: Manual Add or Automatic Add

Manual: click “Add Device” button in configuration client Device option as above picture, you will see the following interface.



The 'Add Device' dialog box contains the following fields and controls:

- Device Name: DVR
- Device Description: (empty)
- Device Type: DVR/NVR/IPC (dropdown menu)
- Device Address: 192.168.0.99
- Device Port: 8101
- Login User: admin
- Login Password: *****
- Buttons: OK, Cancel, Other Setting

Add Device: Input all information according to the instructions, click “OK”, The added device

will be shown in the selection area.

Modification: Enter into device connection interface, modify all information according to the instructions, click “OK”.

Delete: on device connection interface, click “Delete” you will see “Yes” or “No”, “Yes” means delete the device, “No” means not delete the device

Search Device: Click “Search Device” , the system will be searched devices automatically, choose the device you required, click add device, it will be shown in the device list.

Note: 1. All information filled out must be correct for new add device or it will inference the management of platform.

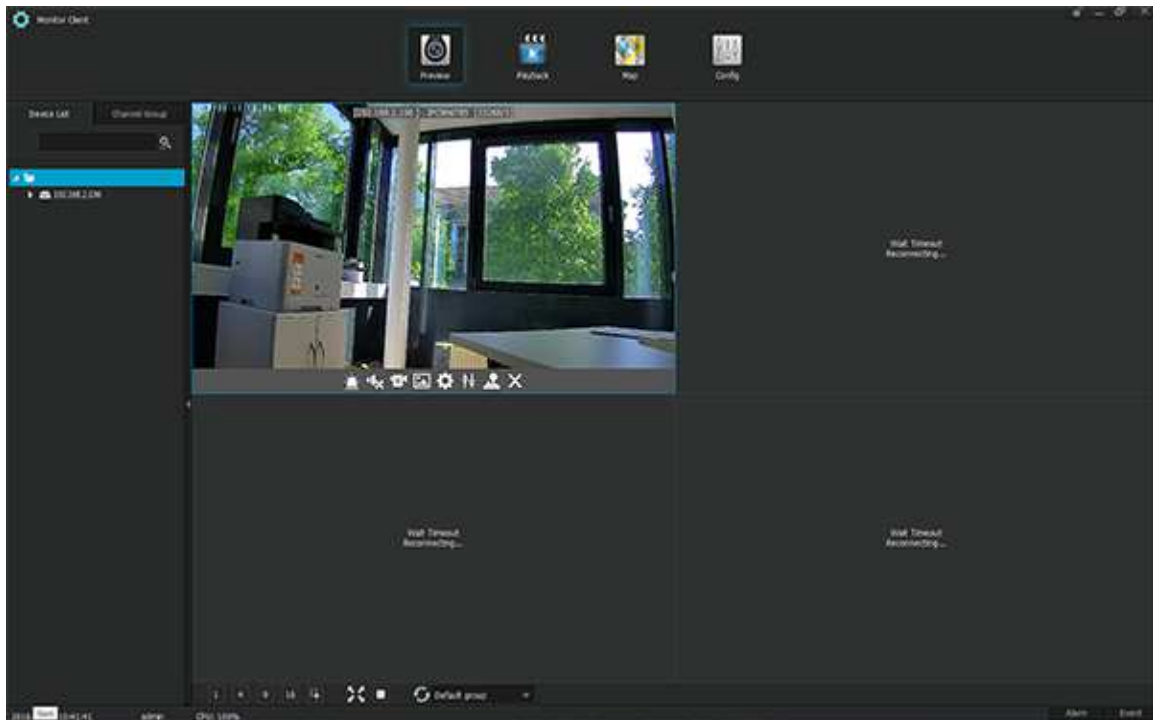
2. When you’ve chose the device, hold the left mouse button down and drag your mouse pointer to other areas.

3. For added devices, System default connection user name is “admin”, password is “888888”, Both alarm in and out channel are 0.


7. Monitoring and playback

7.1 Real-time Monitoring

Log in Monitor Client, choose device on left side device list, hold the left mouse button down and drag your mouse pointer to the window on right side for real-time monitoring, support maximum format 8X8.



1) Click every play window, you will see a fast operation menu

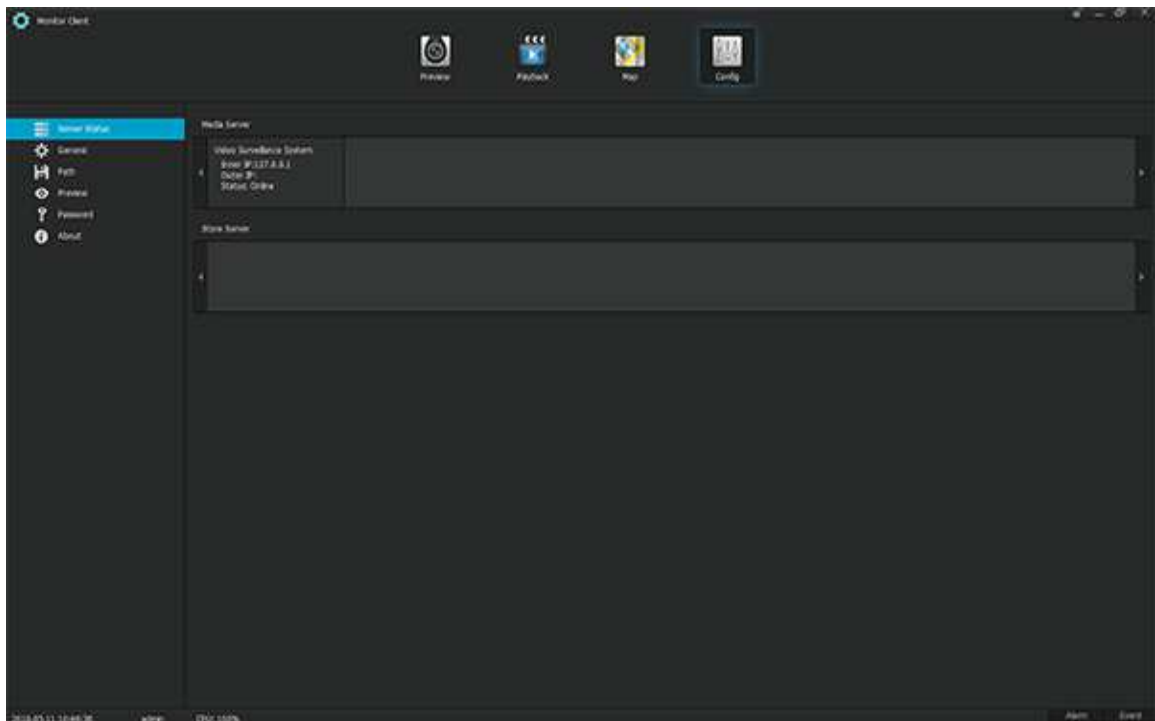
 Functions from left to right are Alarm indicator light, Voice On/Off, Local recording, Screen shot, Parameters setting, Video features adjustment, PTZ control and off.

2) Click right mouse button on selected device, you will see Device parameter, Voice broadcast, Checking time, Restart and Add to channel group.

3) Click right mouse button on selected channel of device list, support channel parameter setting.

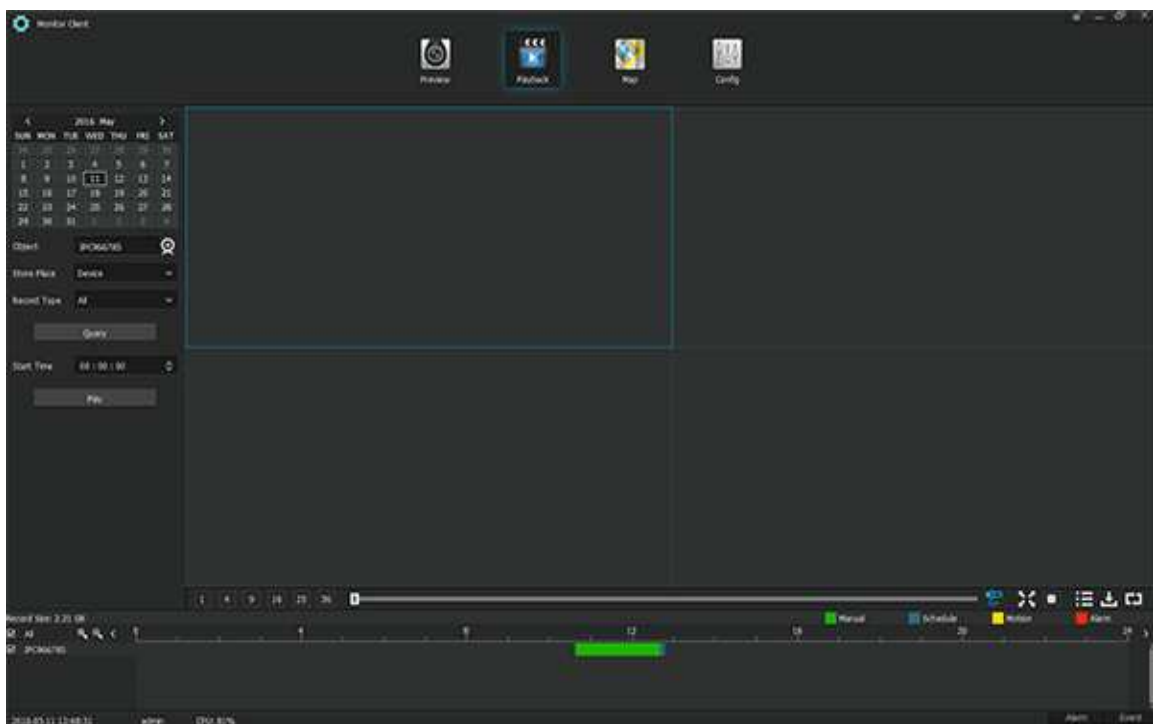
Except drag down channel for preview, can also sequence by setting it up well firstly. Setting process is Configuration Client---Device management---Sequence interface. Detailed procedures please refer to 10.5.

If you want to switch recording stream into network stream, you can set up preview function on monitor client. The second way is set up recording, photo paths and revise password. The third way is set up remote parameters by remote monitor menu modification button.



7.2 History playback

Click “Playback” on monitor client, you will see the following interface.

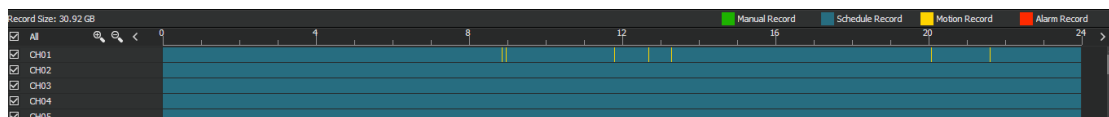


Target name: Target is device which need to see playback video, click camera icon on right side, you will see the device list, after double click to confirm the device, device list interface will be self-closing.

Storage location: means recording video storage location. Video device, storage server and record type are optional.

Record type: Record type are separate to manual record, timing record, motion record, alarm record and all channel record. User can search record video according to record type or all channel record.

Click search button, wait 1-2s, you will see data shown in the interface.



Note: 1. If storage location is video equipment, record type display in different color, manual

record is green, schedule record is army blue, motion record is yellow, alarm record is red. Refer to the right side on data list.

2.If storage location is storage serve, record data display in blue.

3. All channel left side “√” means selected channel simultaneous playback, choose one channel to play window and double click any time point, you will see playback video, Grey parts means no video data.

4.Start time setting, user can see the playback video in appointed time.


7.2.1 Screen switch

Click icons below in the play window to switch screen



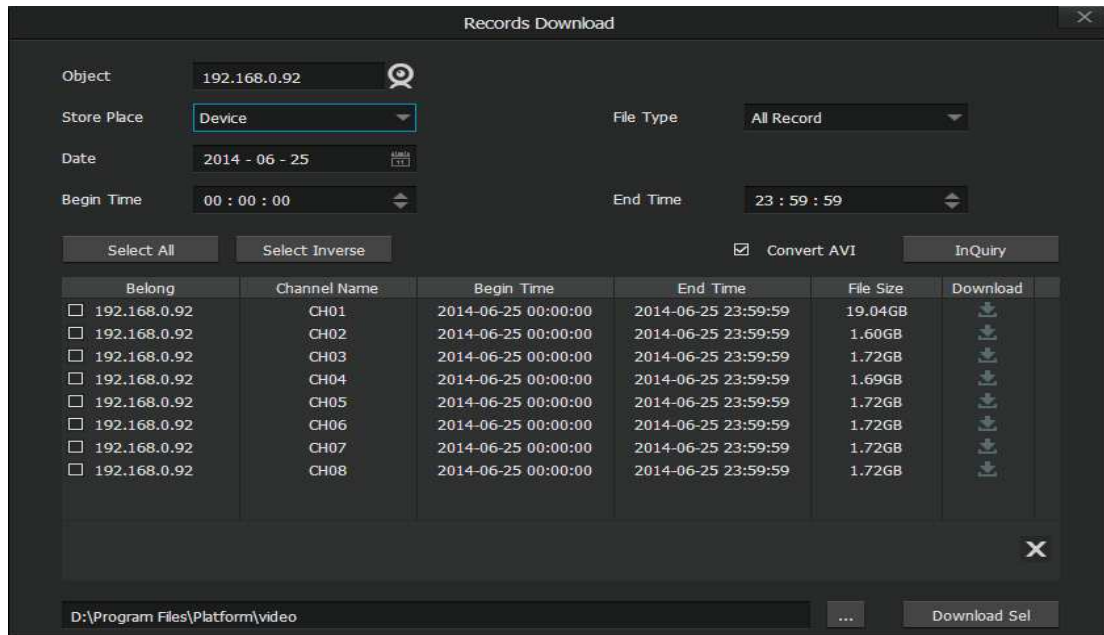
Playback format is 1、4、9、16 optional. The following icons are Full screen, All stop, Local Play, Records download, Format convert to AVI.

7.2.2 Download

Click “

Choose a store place, there is a download button beside query data, you can direct download, if a lot of data download needed, click “√” in front of channels, and click“download” below store path.

Download default file format is 264, local play is available in platform, if need convert to AVI format file, click AVI before download, the download file is AVI format.



If HDD is full, system will show “HDD room is full”

7.2.3 Play control

- 1) In query data line, choose the channel first and double click the data line to playback.
- 2) when playing, you will see a status line, ON/OFF voice, Photo, Back play, Stop/Start, Slow forward, Fast forward, OFF etc.



Voice: Click voice button below the video window to ON/OFF voice.

Photo: Click photo button below the video window to snapshot photos.

Fast backward: Click Fast backward button below the video window to backward playing video.

Suspend: Click suspend button below the video window to suspend playing video.

Play: Click “play ” button below the video window to continue play paused video;

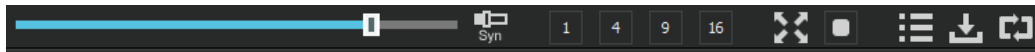
Slow forward: Click “slow forward ” button below the video window to slow forward playback the video;

Fast forward: Click “fast forward ” button to fast forward the video;


Stop: Click “Stop ” button to stop playing the video;

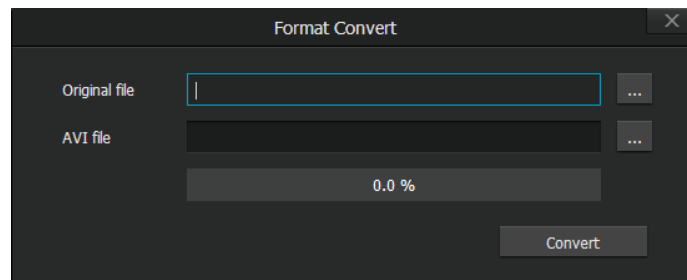
Progress bar: progress bar is below all the playback windows (it’s on the left of the screen format button), it shows the progress of the selected window. There is a syn button on the right of the progress bar, when it indicates syn, all the playing windows are synchronized. If u drag the

process bar, all the playback windows play the events at the same time; when it indicates cross, all windows are not synchronized, process bar only works to the selected window.



7.2.4 AVI format-convert function

Click  button on the Playback interface, appears as the following pic:



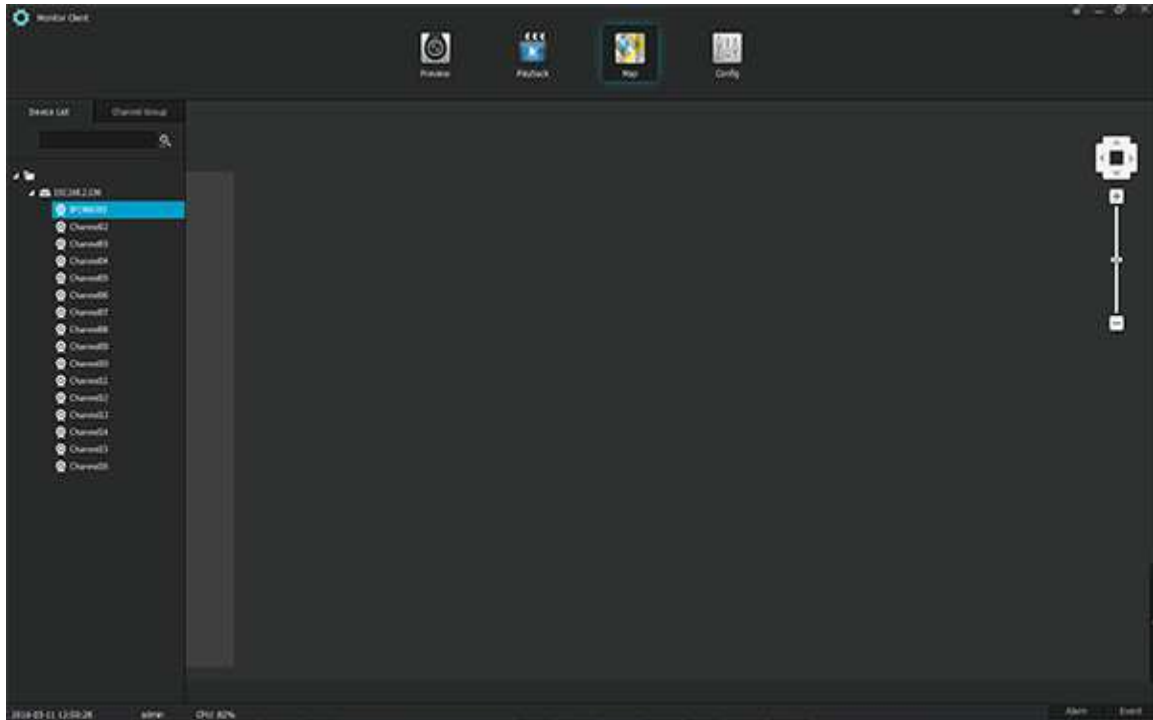
Select a downloaded file in local or a file in the storage server, then start converting, the converted file will store to the original path.

8、 Electronic Map

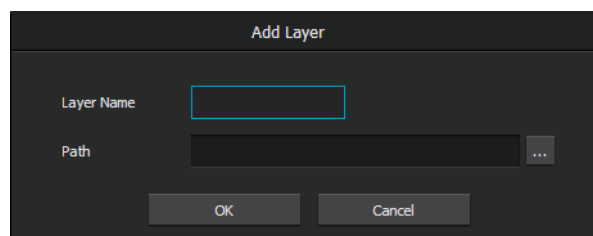
You can set up electronic map, the positions of cameras and the positions of the sensors in Configure client and Alarm client. Monitor client provides map-viewing and device status checking functions only

8.1Local map setup in configure client

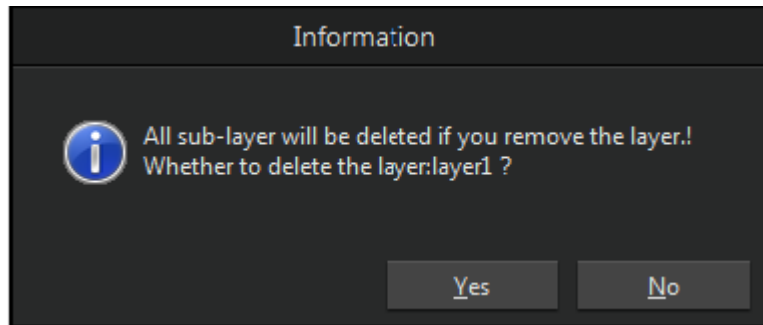
1.Entering CMS-Config Client-Map-Local Map .



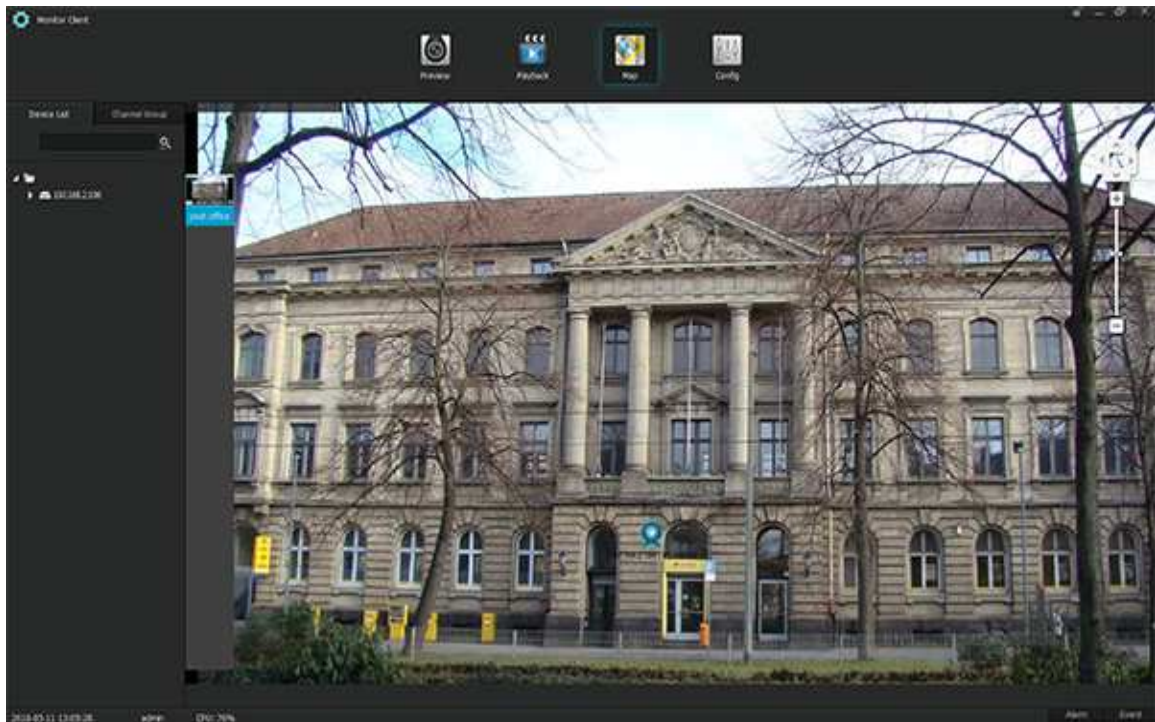
2. Add layer by clicking right mouse button on the blank area of map, then select add bro-layer, or click the add bro-layer button under the interface. Select storage path after naming the layer.



- a. You can scroll the mouse wheel or click the zoom in/out button to view the map after you add the map.
- b. You can modify the layer and layer name by clicking right mouse button above the layer, and select modify layer.
- c. You can add a bro-layer by clicking right mouse button under the layer and select add bro-layer. You can also click the add bro-layer button under the interface to do so.
- d. You can add a sub-layer by clicking right mouse button and select add sub-layer, or click the add sub-layer button under the interface.
- e. You can delete the layer by clicking right mouse button and select delete layer, if this layer contains sub-layers, sub-layers will also be deleted.
- f. When you stop your mouse on the layer, it will automatically show the sub-layer. By clicking the right mouse button above the sub-layer and select return to upper to return to upper layer.



3. Add the new added device in the device list to the layer
 - a. Drag all the cameras to the layer by drag the device to the layer directly (check the property and delete node by click right mouse button on the device or camera)



- b. Add one or several cameras to the layer by drag it/them separately. (check the property and delete node by click right mouse button on the camera)

4. If the device added to the platform alarms (e.g: motion alarm, sensor alarm etc.), the device in the electronic map will blink and the alarm light will on.

8.2View electronic map in Monitor client, Alarm client

1.You can view the electronic map in monitor and alarm client (Layer-add is not available in

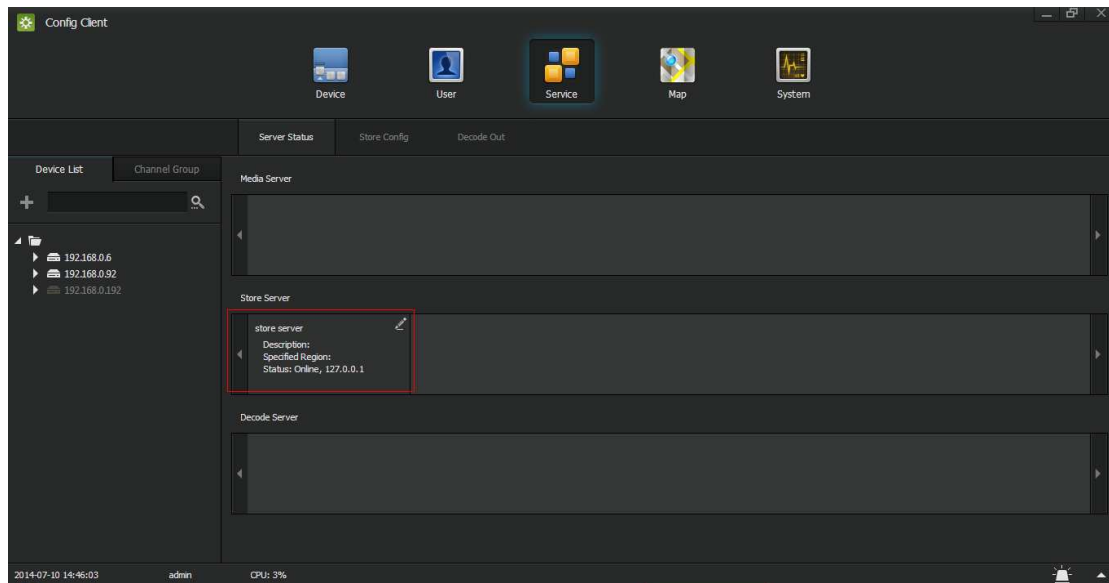
monitor client)

2. You can see the device icon and the alarm light blinking when the device host is alarming.
3. You can view the real-time video by double click the added device or camera.

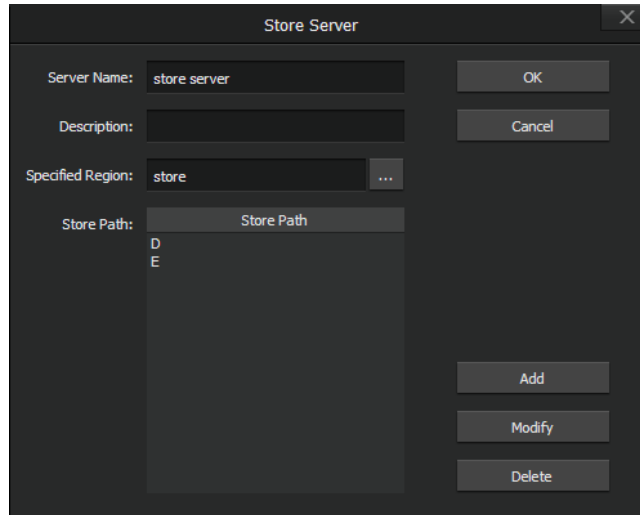
9、Storage configuration

9.1 Store configuration in Config client

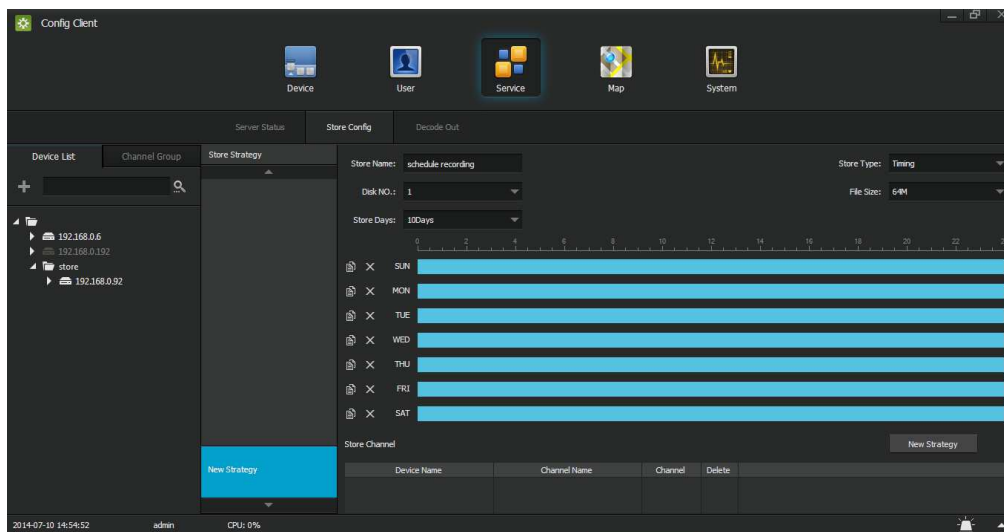
1. Store server kit must be installed during the platform installation if you need to use it. Check the information in Config client-service-server status-store server to confirm the installation of store sever. (Also works to check the installation of other server kits)



2. Click the modify icon on the top right of the store server to select store area and store path. Click add button, and select one disk, the disk will show below the store path.



3. Enter Cofig client-service-store config to add a store strategy. Click new strategy and input store name, store type, disk no., file size, store days, select deployment time scale (deployment time scale is not selected by default, selected time scale is blue)



Store types are timing, alarm, moving. Timing is to record the selected time; moving is to record when motion detected in the selected channel is triggered; alarm is to record when the alarm in selected channel is triggered. The length of moving and alarm record need to be setup.

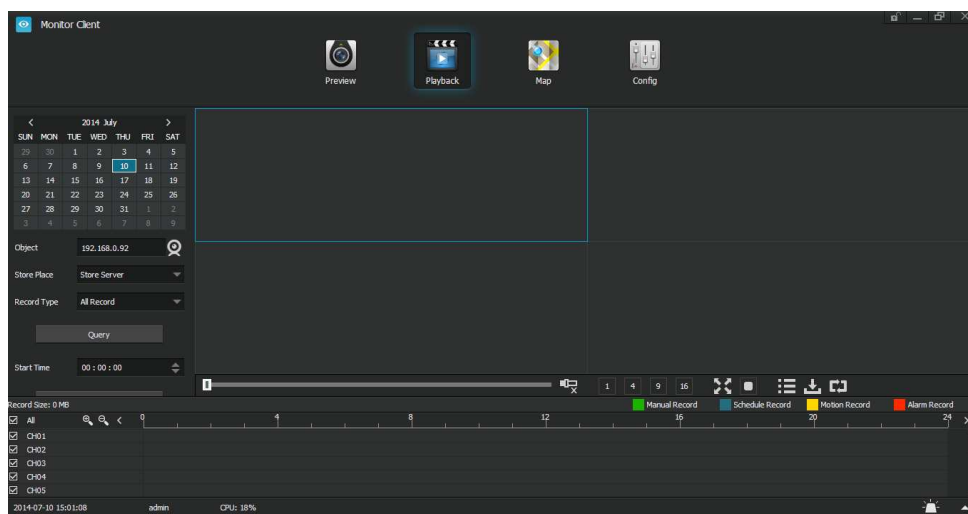
The HDD number depends on the order of hard drive in storage server.

The storage days means how long it will keep on recording , after the days it will auto overwrite . If the hard drive is not enough for those days , it will auto overwrite when the hard drive is full.

4. If you want to modify the strategy, select it and modify it, then save it. Click the delete button on top right to delete the strategy.

9.2 How to replay recorded video?

- 1) All the video recorded is saved in the disk you set in “Storage Configuration”, File is named as “PSSvideo”
 - a. The recorded video saved in “PSSvideo” is named in recording time, Channel No, it can be replayed by nplayer or Storm Media.
- 2) From the name of video file, you can know when and which channel this video is recorded, .
 - a. How to replay recorded video via Monitoring CMS in history playback interface.
 - b. Select the time you want to replay.
 - c. Select the device you want to replay in the target sheet.
 - d. Select the “Storage server” in “Storage place sheet”
 - e. Select “ All Video”, you can also select one kinds of video as well
 - f. Click “Inquiry” button, the data recorded will be showed on the bottom.
 - g. Click “ Play” button to replay the video recorded, you can also choose the recording time you want to start.



10、 Alarm Client

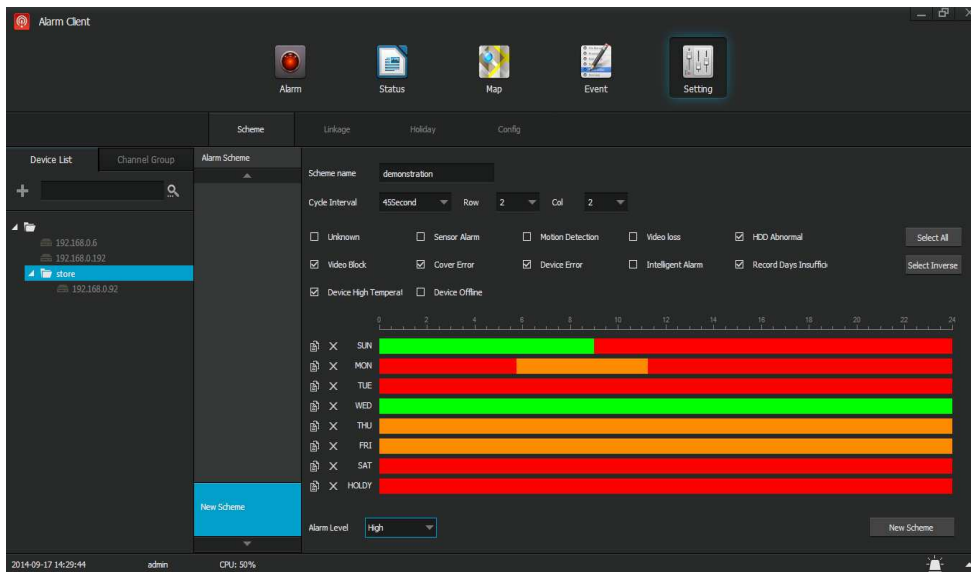
Alarm Client interface include status of channel, port and HDD. Small boxes have two status: Highlight or Grey. Highlight means channel normal. Grey means video lost; Port status is alarm output status, Highlight means alarm normal. Grey means alarm lost. Click HDD can check the HDD utilization.

Click Map you will see the cameras location, when alarm triggered camera will be flashing.

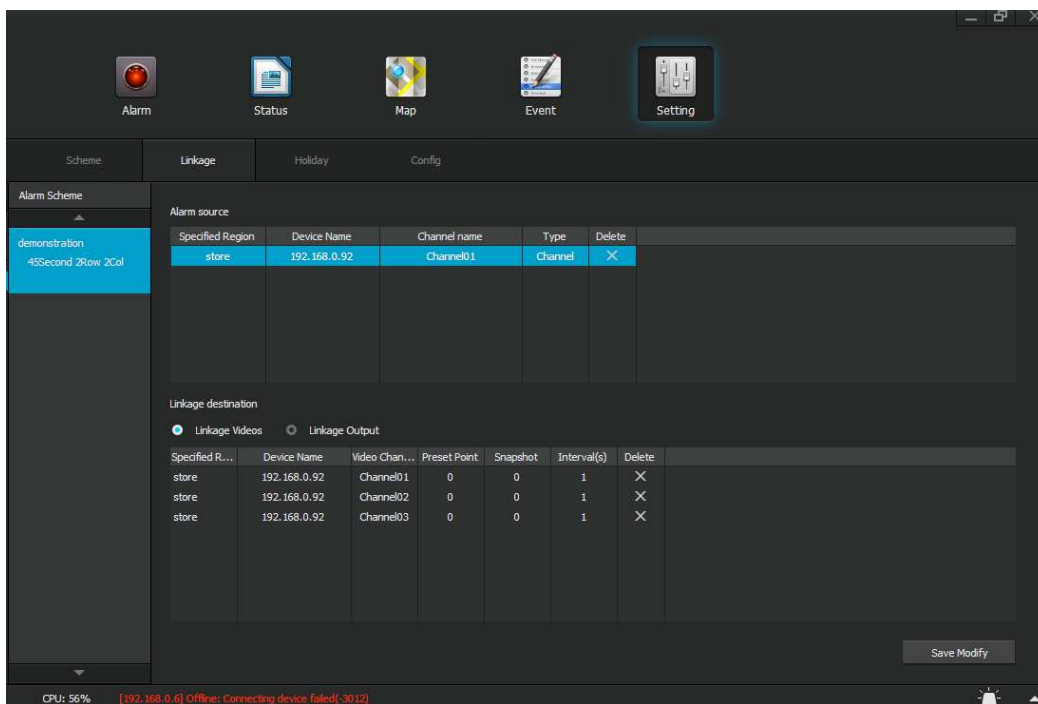
Event: Click Query you can check event in all areas or equipment, include device alarm log

and system operate log; and delete or export all the contents through query. Select a period of time(days/week/month) to statistics the total alarming time at each time point during this period.

Setting interface is same as CMS1.0 alarm control function, to set up alarm level and alarm.



Enter into setting interface, click new scheme to create a new scheme, Cycle Interval, Row, Col mean when a lot of alarm happened, a lot of windows alarm video display, how long to switch one cycle, here cycle is not related to the sequence on configuration client. When finish to set up cycle and alarm event, drawing time by pen icon in below time lines, different time can set up different alarm level, Red means high level, yellow means middle level, green means low level. After set up well, click “New Scheme” at bottom right corner, you will see the new scheme show in the scheme list at left side.



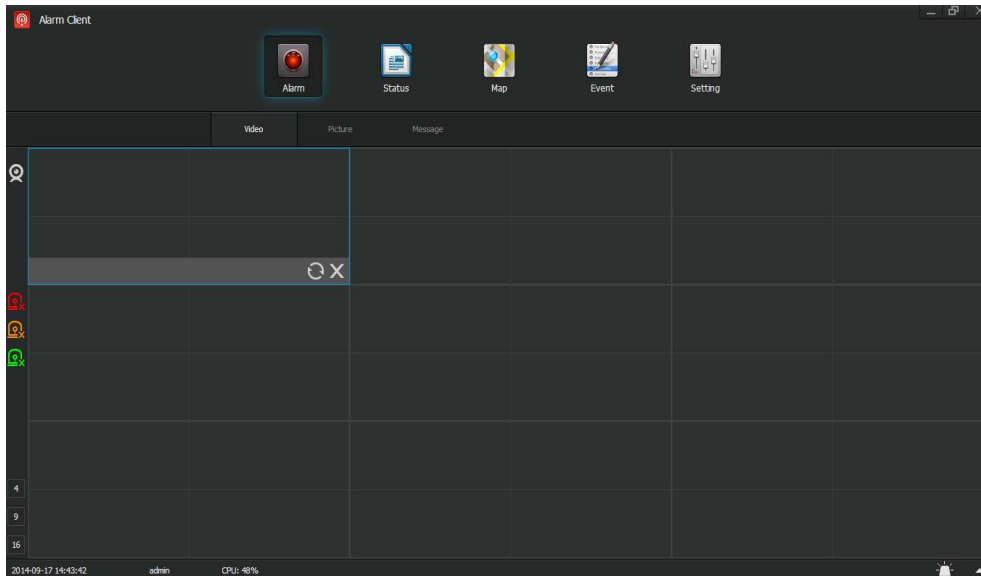
Click the new scheme and set up Linkage, linkage videos and output are available.

Config interface can set up alarm sound, user can set up different alarm sound by themselves,

upload file only support wav format. And also set up different alarm video playing time level.

Drag device area and device name to relevant position. Linkage here is same as CMS1.0.

Alarm interface functions are same as CMS1.0 instant Alarm menu.



Set up alarm video on config interface first, if has alarm on alarm linkage, the alarm video will be displayed, here set up 9 windows(red frame means one window), means can up to play 9 alarm video at the same time. Default cycle is 2*2 for every window. If has set up well Row and Col previously, alarm video window will automatic convert to set row and col. Alarm video channel will be cycled, when reach to setting time, cycle will auto-close.

Note: Alarm video window are displayed in different color, it depends on the setting level in scheme.

Select alarm record to check record pictures. Only picture quantities are not 0 have pictures.